

TAIJI

<http://www.taiji.co.jp/e>

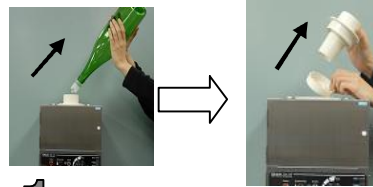
Cleaning Manual

TSK-160

1.8 lit. bottle style

*Clean Sake warmer dispenser regularly, at least once a week to insure sake is served in good condition.

Preparation



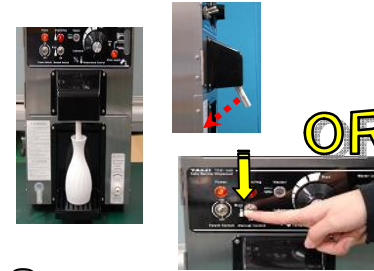
1.

Remove the Sake bottle, Bottle holder funnel, and Filter.



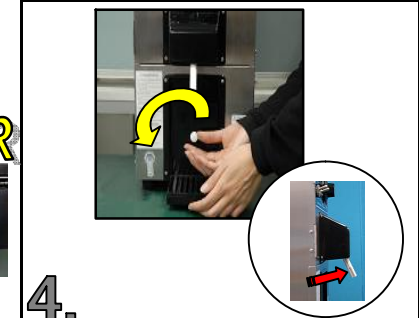
2.

Power switch → ON.
Tem. Control knob → OFF.



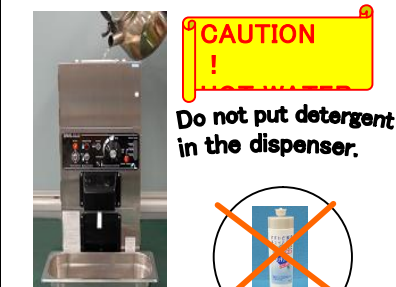
3.

Empty all Sake remaining in the dispenser. Push the Nozzle down or dispense using the manual switch.



4.

Remove the Sake server bottle holder. Be sure the Nozzle is up.



5.

Place an empty container under the Nozzle. Pour "HOT" water (below 70°C) into the dispenser.



6.

Pull the Nozzle down and let the hot water run through the system.



7.

Repeat step 5. & 6. 2~3times. Wash the removable parts with warm water.

FINISH!

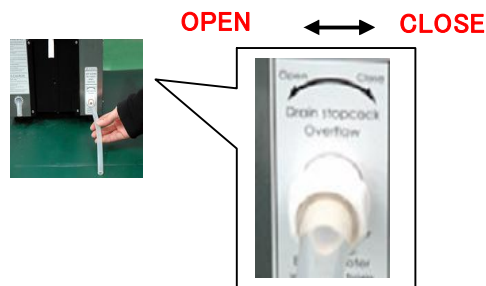
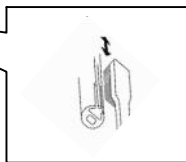
8.

Switch the power OFF. Wipe the dispenser body with dry or tightly-wrung wet cloth.

Monthly maintenance



Scrub the sensor electrode on the tip of the Nozzle.



Replace water in the Water Tank. Connect the silicone tubing and open the cock to drain water. Refill the tank with fresh water.

NOTE

After cleaning, Sake may contain some cleaning water. Use the first 50 cc of Sake for cooking.

TAIJI

http://www.taiji.co.jp/e

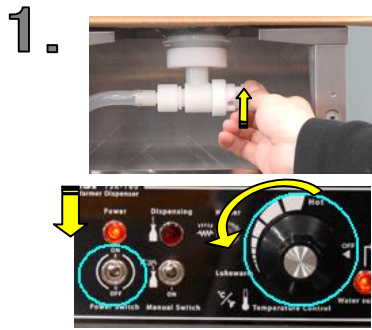
Cleaning Manual

TSK-160

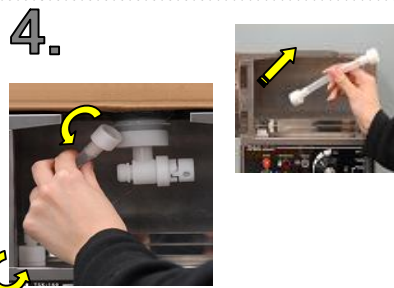
Cubic container style

***Clean Sake warmer dispenser regularly, at least once a week to insure sake is served in good condition.**

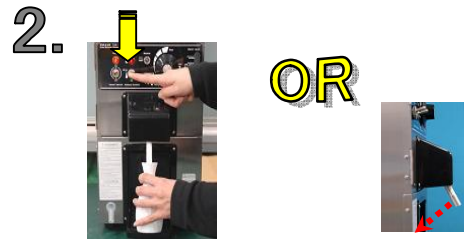
Preparation



1. Close the Stopcock.* (Ref. *Note)
 *Note)
 Power switch → ON.
 Temp. control knob → OFF.



4. Remove the cubic container from the top of the dispenser.



2. Empty all Sake remaining in the dispenser. Push the Nozzle down or dispense using the manual switch.

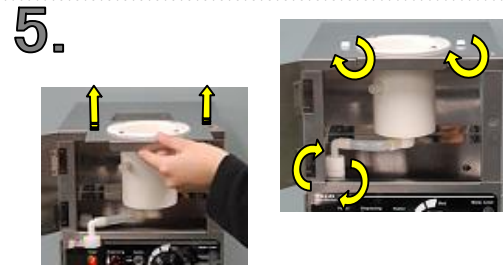
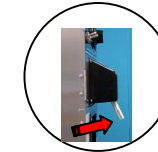
NOTE



Loosen the screw to clear the Sake left inside the tube.



3. Remove the Sake Server Bottle Holder. Be sure the Nozzle is up.



5. Place the Bottle Holder Unit, or go to step 5-A when using an empty cubic container.



CAUTION ! HOT WATER

Do not put detergent in the dispenser.

6. Place an empty container under the Nozzle. Pour "HOT" water (below 70°C) into the dispenser through the Bottle Holder.

5-A.

You can also use an empty container for cleaning

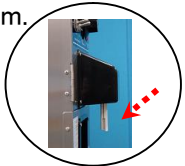


Go to No. 7.-8.



7. Pull the Nozzle down and let the hot water run through the system.

CAUTION ! HOT WATER



8. Repeat step 6. & 7. 2-3times. Wash the removable parts with warm water. Power switch OFF and wipe the body of the dispenser with a dry towel.

FINISH !

After cleaning, Sake may contain some cleaning water. Use the first 50 cc of Sake for cooking.

***NOTE**

Stopcock



CLOSE
(Narrow gap)

OPEN
(Wide gap)

Monthly maintenance

Scrub the sensor electrode on the tip of the Nozzle.



Replace water in the Water Tank. Connect the silicone tubing and open the cock to drain water. Refill the tank with fresh water.

